



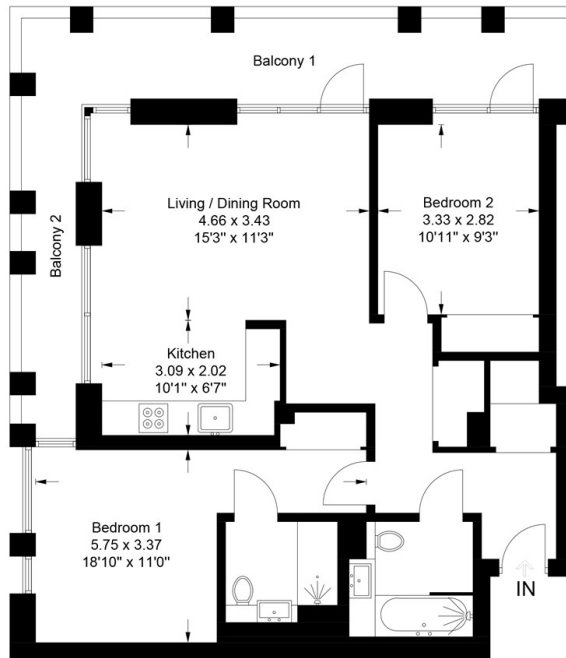
## Belvedere Row, Apartments Fountain Park Way, London, W12 W12 7LD

£3,700 PCM

- Luxury furniture package
- Private cinema
- Swimming pool
- Miele kitchen appliances
- Exceptional standard
- Communal gardens
- Gym/Spa
- 24 hour concierge
- Business meeting rooms
- Air cooling

## White City Living Fountain, Park Way, W12

Approximate Gross Internal Area = 72.5 sq m / 780 sq ft



## Viewings

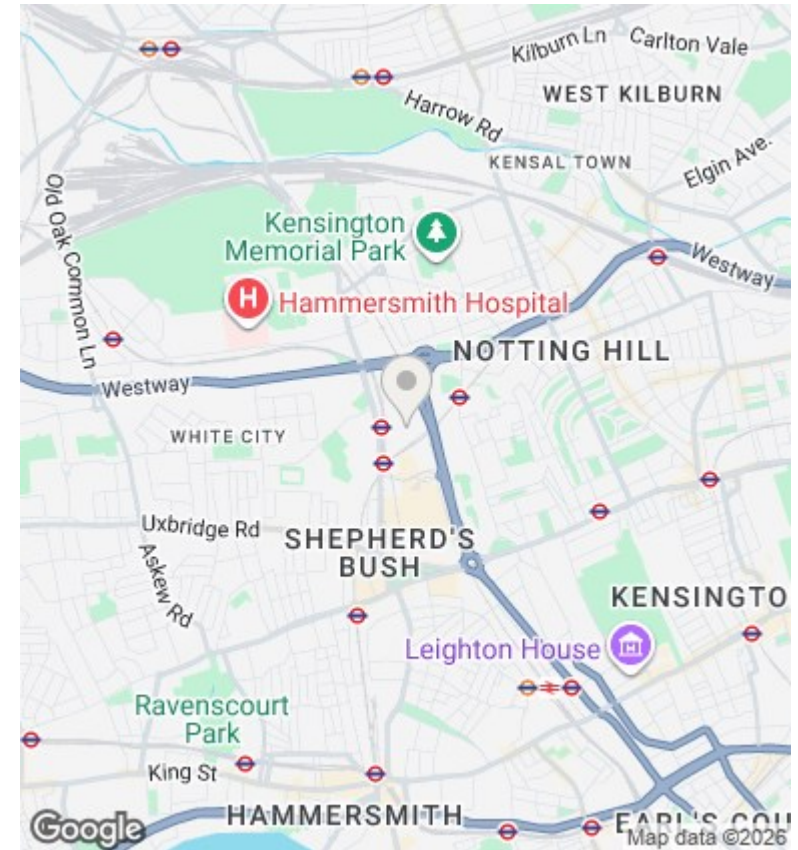
Viewings by arrangement only.  
Call 02077225022 to make an appointment.

## Council Tax Band

F

## EPC Rating:

B



Energy Efficiency Rating		
	Current	Potential
Very energy efficient - lower running costs		
(92-plus) <b>A</b>		
(81-91) <b>B</b>	85	85
(69-80) <b>C</b>		
(55-68) <b>D</b>		
(39-54) <b>E</b>		
(21-38) <b>F</b>		
(1-20) <b>G</b>		
Not energy efficient - higher running costs		
England & Wales		EU Directive 2002/91/EC